



# OUR CAPABILITIES

Enprotech is committed to delivering innovative solutions for the steel and aluminum industries that will ensure continued peak metal processing equipment performance. Whether it's a simple repair job, or a complex turn-key project, our expert staff is ready to meet all your challenges.

Our accomplished craftsman continuously work with our customers to improve their manufacturing cost, product, quality, and overall employee safety. We apply a unique combination of global technologies, experience, and industry knowledge in every facet of our manufacturing process and are proud to offer the following services:



## REPAIRS

Without high-quality machines performing at maximum efficiency, it is virtually impossible to meet tight production schedules. Our highly skilled repair team can maintain, troubleshoot, repair, refurbish or rebuild your machinery- offering you a cost-effective alternative to buying new.



## ENGINEERING

Our engineering expertise can enhance your machine performance and productivity, improve your reliability and maintainability and minimize your set-up time. Armed with stress analysis and solid modeling tools, our engineering experts assure your equipment is designed to handle even the toughest jobs.



## EMERGENCY SERVICES

Maintenance is an inevitable part of any successful machining operation, but certain repairs are urgent and must be addressed immediately. We offer emergency repair services and are available anywhere, 24 hours a day, 7 days a week.



## WELDING & FABRICATION

Our welding and metal fabrication expertise enables us to improve designs and solve problems for our customers. Our experienced technicians have completed a wide range of projects involving a number of weld repair and fabrication services over a variety of industries.



## MANUFACTURING

Take advantage of our state-of-the-art technology and let us design and manufacture all of your process equipment. Our full service facilities have the equipment and ability to produce virtually any part you need to exact specifications.



## CNC MACHINING

We utilize advanced CNC machining systems for large and small components. From prototype production to finished projects, you can trust us to handle your most complex machining requirements.



## ON-SITE FIELD SERVICES

Our field service group is prepared to solve your problems on-site for all types of steel and aluminum making equipment, metal stamping press equipment, and metal forging press equipment.



## INSPECTION SERVICES

Our highly knowledgeable staff is ready to find existing or potential equipment problems. Contact us for trouble-shooting, disassembly, routine maintenance, and all your requirements for field service assistance specifications.



# INDUSTRIES WE SERVE

While your machinery is extremely powerful and robust, it's still susceptible to wear and tear, breakdowns, internal/external damage, and can really take a beating in the difficult working conditions found in a mill.

Our knowledge of materials, technologies, production processes and appropriate production capacities enables us to produce or repair various types of equipment. We're proud to be serving the following industries:



**STEEL**



**ALUMINUM**

## MACHINING HIGHLIGHTS

### 7 LARGE FLOOR MILLS

- Load capacity range up to 400,000 lbs
- Travels ranging up to 349" x 156"
- Rotary table with 160,000 lb capacity

### 9 CNC TABLE MILLS

- Table capacity of up to 44,000 lbs
- Travel up to 140" x 96"



### 7 CNC LATHES

- Capable of handling shafts in length up to 240"

### CONVENTIONAL LATHES & MILLS

- Capable of turning up to 480" in length and 97" in diameter



### VTLS

- Capable of turning a part up to 139" in diameter

### 7 SUB-ARC WELDING STATIONS

- Capable of welding shafts up to 384" long and 72" in diameter

### 22 CRANES

- With lift capabilities up to 50 tons



# OUR SERVICES

The 21st century has brought dramatic changes to the steel and aluminum making industries. Enprotech has evolved in anticipation of these changes , so that we can most effectively meet the needs of our customers in today's competitive global market.

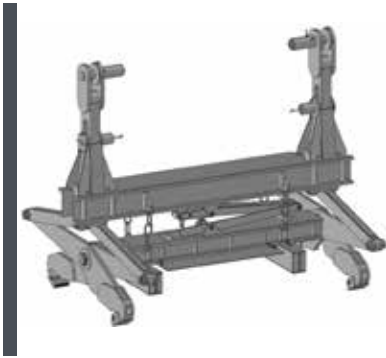
We provide a full range of products and services used in the manufacturing, shaping and processing of both steel and aluminum such as silica brick for metallurgical coke ovens and rolls for the finishing process.

With over 50 years of experience, an extensive variety of parts and services, and a full team of highly-qualified experts, we have the capabilities to complete all of your required services as a single-source contractor throughout the entire U.S.

Here are some of the things we're best known for:

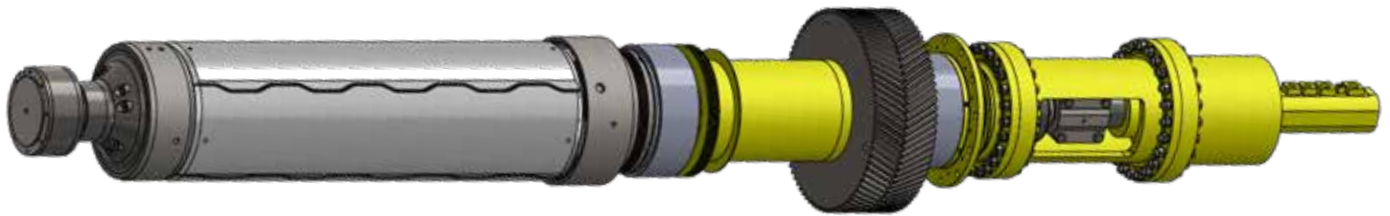
IRONMAKING		
Ore Dock	Stacker Reclaimer	Blast Furnace
STEELMAKING		
Basic Oxygen Furnace	Ladle Metallurgical Furnace	Electric Arc Furnace
Caster - Segment Repair	Spray Nozzles	Bearings
Bearing Housings	Rolls	Full Caster Evaluation
HOT ROLLING		
Mandrels & Reels	Descaling Nozzles & Hoods	Guides & Tables
Chocks	Rolls & Roll Change Sleds	Side Frames
Slab Cars & Transfer Devices	Spindles & Carriers	Screwdown Screws & Nuts
Shears	Drive Shafts	Gear Boxes
Pinion Stands	Coil Cars & Downcoiler Rebuilds	Conveyors
COLD ROLLING		
Mandrels & Reels	Descaling Nozzles	Entry Guides
Chocks	Rolls & Roll Change Sleds	Coil Cars
Gear Boxes	Spindles & Carriers	Coil Prep Equipment
Shears	Aprons & Belt Wrappers	Screwdown Screws & Nuts
FINISHING		
Galvanizing	Painting	Specialty Finishing
Skidding & Crating	Shipping	Storage
CRANE REPAIR		
Ladle Hangers	Slab, Coil & Roll Tongs	Crane Wheel Assemblies
J Hooks	Cable Drums	Hook Blocks

# ENGINEERING & NEW PRODUCT DESIGN

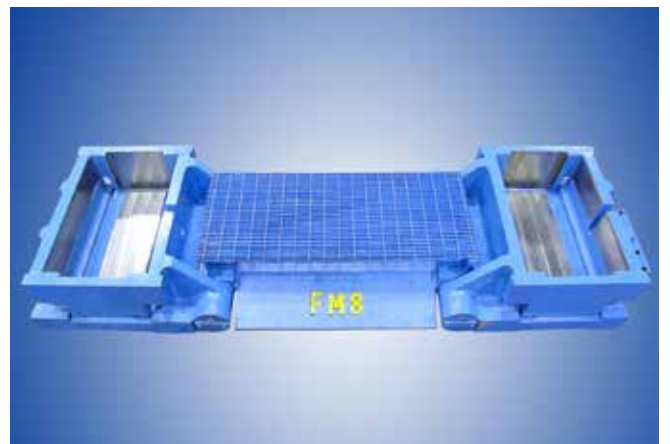


Our in-house engineering department boasts the latest in design and engineering technology. We're staffed by industry leading engineers from various disciplines, fully versed in both the design of new equipment and modifying your existing equipment. In support of our customers, we maintain an electronic drawing database, allowing for efficient archival and retrieval, streamlined revisions and revision control and easy accessibility to electronic transfer.

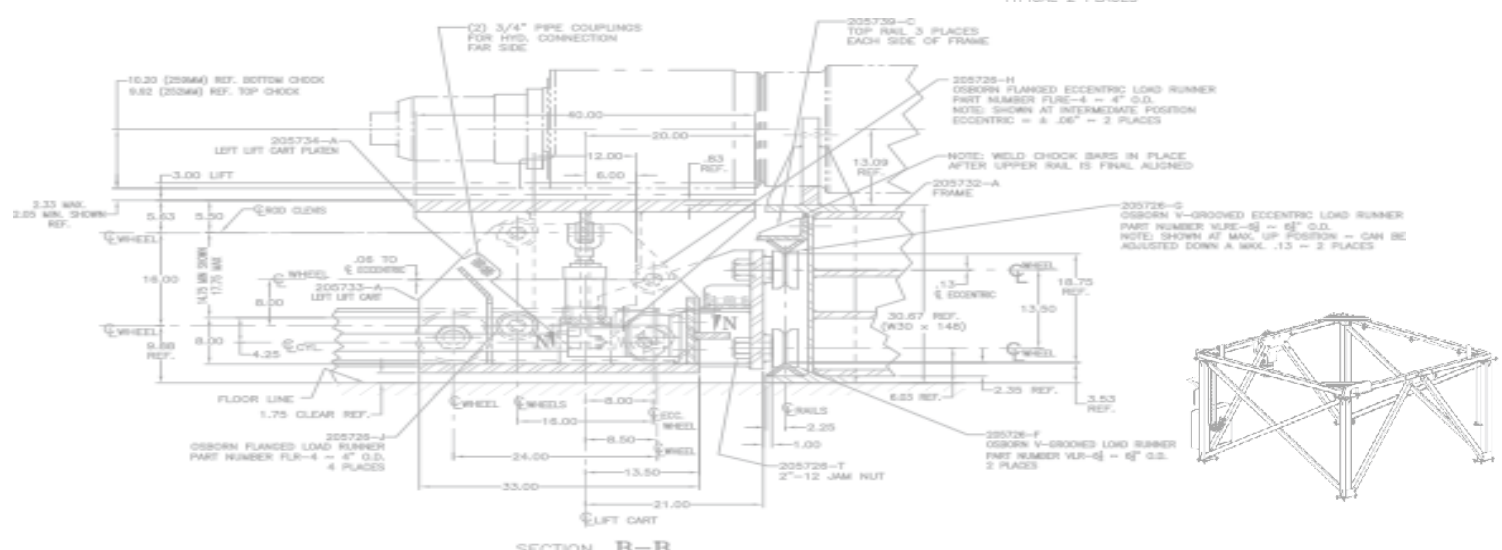
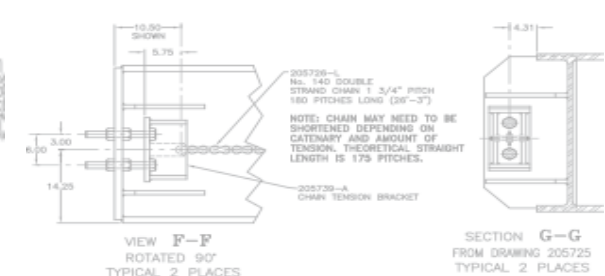
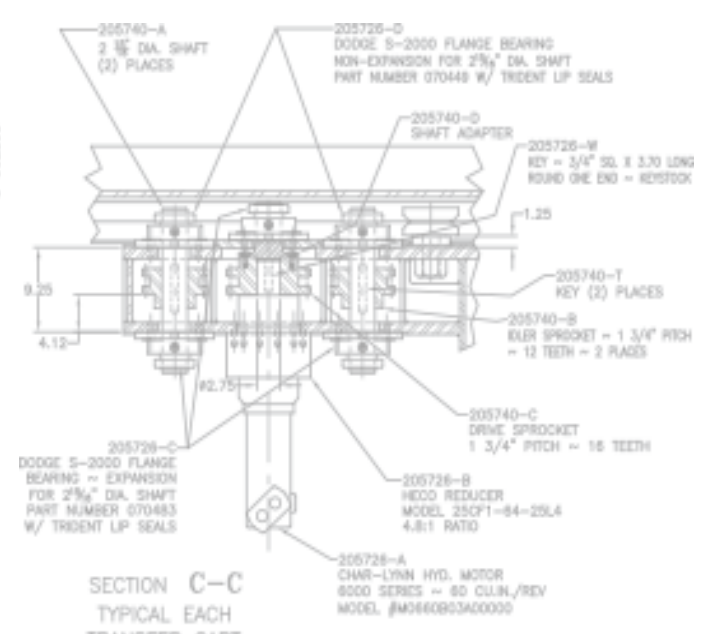
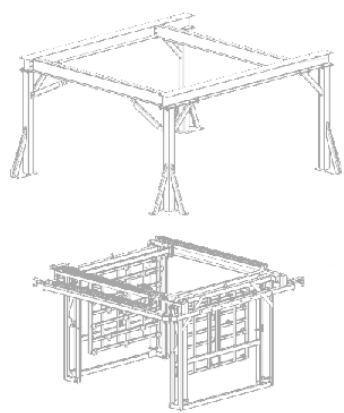
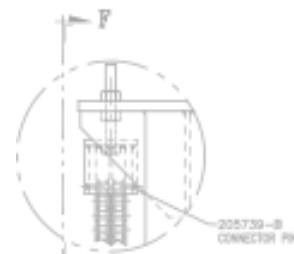
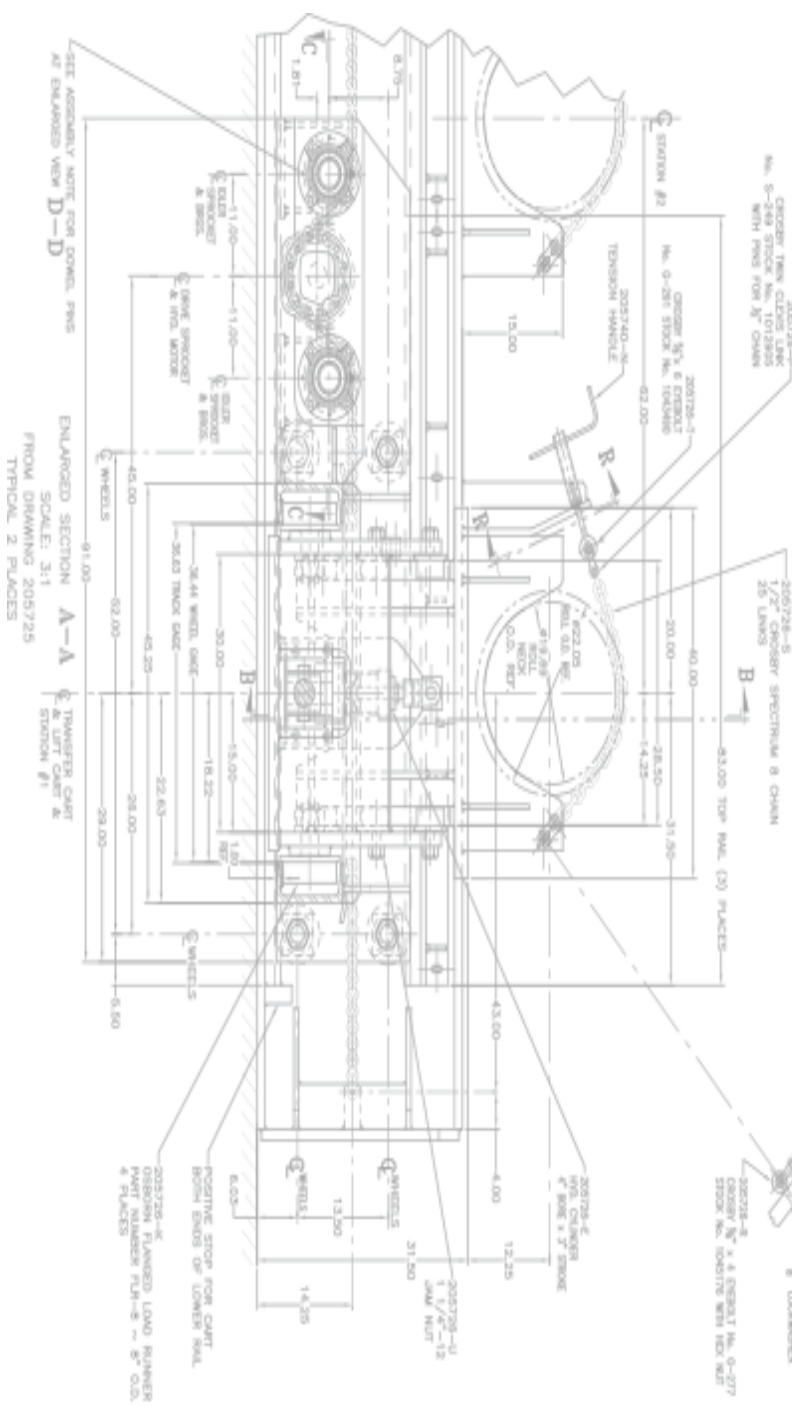
Our staff can work with your maintenance and engineering managers to improve your existing equipment, reverse engineer even the most complex assemblies, and to ensure that your processing lines are operating per OEM specification. Complete engineering services are available for on-site project evaluations.











# ABOUT ENPROTECH INDUSTRIAL TECHNOLOGIES

As a leader in providing consumables, engineering, manufacturing and equipment repairs to the steel and aluminum industries, Enprotech is on the forefront of providing solutions for the global market. Our outstanding customer service coupled with in-depth engineering expertise can enhance your machine performance and productivity, improve your reliability and maintainability, and minimize your set-up time and costs. We're a premium brand that's best known for:

- Delivering customer peace-of-mind through product quality and reliability
- Extensive expertise in a wide range of manufacturing capabilities
- Consistently outperforming all competitors in short run production, delivery, lead-time, and service
- Unmatched sales and service infrastructure with deep customer relationships
- Certified ISO 9001 with trained professionals to ensure quality at the source.

Enprotech Industrial Technologies, LLC. is a subsidiary of Enprotech Corp, Cleveland, OH, and a member of the ITOCHU family of worldwide companies.



## OUR FACILITIES

Our engineering and production team gives you technical and application expertise to overcome every type of challenge.

### HQ & OHIO DIVISION

4259 E. 49th Street  
Cleveland, OH 44125  
216.883.3220  
Fax: 216.883.3422

### INDIANA DIVISION

3234 North State Road 39  
LaPorte, IN 46350  
219.326.6900  
Fax: 219.326.6901

### MICHIGAN DIVISION

16800 Industrial Parkway  
Lansing, MI 48906  
517.372.0950  
Fax: 517.372.3334

### KENTUCKY DIVISION

223 Peterson Dr.  
Elizabethtown, KY 42701  
270.737.1900  
Fax: 270.765.2308

### MEXICO DIVISION

Calle Jerónimo Gaytan No. 512 - Interior A  
Parque Industrial Server  
Arteaga, Coahuila, C.P. 25368  
(52) 222.564.9286

### REQUEST A QUOTE

Visit us on the web at  
[www.enpromech.com](http://www.enpromech.com) or send us an  
email at [info@enprotech.com](mailto:info@enprotech.com)

The unrivaled knowledge of this powerful lineup has long given us more capabilities than any other manufacturer in the United States. It's why our customers can have one single supplier for any of their needs – because we will deliver.



*We are certified ISO 9001 with state-of-the-art equipment, and trained professionals to ensure quality at the source.*

©2018 Enprotech Industrial Technologies, LLC. All rights reserved.